

Introduction to Kuroe

Kuroe is a craftsman town that has prospered as the home of Kishu lacquerware since the Muromachi period. The "saw-toothed" (from above) houses that remain today were part of a unique town where lacquerware merchants and craftsmen lived.

It is said that the techniques of "Negoro Nuri" were introduced to Kuroe in the Muromachi era by the monks of Negoro-ji Temple, who escaped to Kuroe after Toyotomi Hideyoshi's attack on Kishu in the late 1500s.

During the Edo period, it became a lively business town with lacquer craftsmen and many merchants coming and going under the protection of the Kishu Domain.

In the past, most transport of goods was by sea, and today's Kawabata-dori, the main street, was a canal. Water still flows through a channel under the road.

It is believed that the original layout of the town had the woodworkers, the lacquer painters and merchants in separate streets, so that the goods could be passed from one to the other as they were completed. The "saw-tooth" arrangement of the fronts of the buildings probably made it easier to move carts in and out.

Since the Meiji era production has been modernized, a brick lacquer refining factory has been built, and lacquerware has become one of the signature industries of the area.

In the middle of the Showa era, the manufacturing was relocated to a nearby site and sales of lacquerware nationwide reached a peak.

In 1978, Kishu lacquerware was designated by the government as a "traditional craft", and in 2017, the town of Kuroe was registered as part of the cultural heritage area known as "Treasure House of Scenic Beauty : Wakanoura".

There are big festivals several times a year, attended by tourists from all over the country.

Seasonal festival

- Geta-ichi (geta: wooden clogs) (August 14), a summer festival which dates to the Edo Period

- Kishu Lacquerware Festival (1st Saturday and Sunday in November)

- Kuroe Metta festival (Metta: Japanese rice fish) (on a Sunday at the end of May or early June)

Access by plane

① Kansai International Airport (KIX) → Limousine bus (40 minutes)

→ Get off at JR Wakayama Station

② Kansai International Airport (KIX) → JR Kansai Airport Station

→ JR Hineno Station, take Wakayama train

→ Get off at JR Wakayama Station

JR Wakayama Station (Kinokuni Line Platform 4-5)

→ Get off at JR Kuroe or Kainan Station

※ Kuroe is about a 20-minute walk from either of these stations.

Kainan Station has coin lockers, rental cycles, a taxi rank and bus stop.



わがまち元気プロジェクト支援補助金 / 紀州漆器を活用した黒江ブランドの構築協議会



Uruwashi-kan
Kishu Lacquerware Traditional Industrial Museum

address : 222 Funō, Kainan City, Wakayama

phone number : 073-482-0322

business hours : 10:00-16:30

Closed at Obon vacation

(in middle of August) and New year's holiday



- ENGLISH -

Kuroe originally prospered as the home of Kishu lacquerware.

The houses that were built as part of the artisan town in the Muromachi era remain in Kuroe, and you can see evidence of the lacquerware culture throughout the town. Strolling through the unique maze of alleys has become a popular activity.

Nakagoto Shrine

See, buy and hands-on experience/Introducing local shops



1 Uruwashi-kan



General information center. We have a wide range of traditional lacquerware souvenirs. On the second floor, valuable materials are displayed, and on the third floor, you can do "Makie" (hands-on experience of painting lacquer work, payment and reservation required).

MAP B-3

↑ 222 Funō ☎073-482-0322

☎10:00~16:30

☎Obon vacation and New Year's Holiday / Available

HP chuokai-wakayama.or.jp/sikki-k/

☎SNS

☎Facebook

☎Twitter

☎Instagram

☎HP official homepage

☎SNS

☎Facebook

☎Twitter

☎Instagram

☎HP official homepage

☎SNS

☎Facebook

☎Twitter

☎Instagram

☎HP official homepage

☎SNS

☎Facebook

☎Twitter

☎Instagram

☎HP official homepage

☎SNS

☎Facebook

☎Twitter

☎Instagram

☎HP official homepage

☎SNS

☎Facebook

☎Twitter

☎Instagram

☎HP official homepage

☎SNS

☎Facebook

☎Twitter

☎Instagram

☎HP official homepage

☎SNS

☎Facebook

☎Twitter

☎Instagram

☎HP official homepage

☎SNS

☎Facebook

☎Twitter

☎Instagram

☎HP official homepage

☎SNS

☎Facebook

☎Twitter

☎Instagram

☎HP official homepage

☎SNS

☎Facebook

☎Twitter

☎Instagram

☎HP official homepage

☎SNS

☎Facebook

☎Twitter

☎Instagram

☎HP official homepage

☎SNS

☎Facebook

☎Twitter

☎Instagram

☎HP official homepage

☎SNS

☎Facebook

☎Twitter

☎Instagram

☎HP official homepage

☎SNS

☎Facebook

☎Twitter

☎Instagram

☎HP official homepage

☎SNS

☎Facebook

☎Twitter

☎Instagram

☎HP official homepage

☎SNS

☎Facebook

☎Twitter

☎Instagram

☎HP official homepage

☎SNS

☎Facebook

☎Twitter

☎Instagram

☎HP official homepage

☎SNS

☎Facebook

☎Twitter

☎Instagram

☎HP official homepage

☎SNS

☎Facebook

☎Twitter

☎Instagram

☎HP official homepage

☎SNS

☎Facebook

☎Twitter

☎Instagram

☎HP official homepage

☎SNS

☎Facebook

☎Twitter

☎Instagram

☎HP official homepage

☎SNS

☎Facebook

☎Twitter

☎Instagram

☎HP official homepage

☎SNS

☎Facebook

☎Twitter

☎Instagram

☎HP official homepage

☎SNS

☎Facebook

☎Twitter

☎Instagram

☎HP official homepage

☎SNS

☎Facebook

☎Twitter

☎Instagram

☎HP official homepage

☎SNS

☎Facebook

☎Twitter

☎Instagram

☎HP official homepage

☎SNS

☎Facebook

☎Twitter

☎Instagram

☎HP official homepage

☎SNS

☎Facebook

☎Twitter

☎Instagram

☎HP official homepage

☎SNS

☎Facebook

☎Twitter

☎Instagram

☎HP official homepage

☎SNS

☎Facebook

☎Twitter

☎Instagram

☎HP official homepage

☎SNS

☎Facebook

☎Twitter

☎Instagram

☎HP official homepage

☎SNS

☎Facebook

☎Twitter

☎Instagram

☎HP official homepage

☎SNS

☎Facebook

☎Twitter

☎Instagram

☎HP official homepage

☎SNS

☎Facebook

☎Twitter

☎Instagram

☎HP official homepage

☎SNS

☎Facebook

☎Twitter

☎Instagram

☎HP official homepage

☎SNS

☎Facebook

☎Twitter

☎Instagram

☎HP official homepage

☎SNS

☎Facebook

☎Twitter

☎Instagram

☎HP official homepage

☎SNS

☎Facebook

☎Twitter

☎Instagram

☎HP official homepage

☎SNS

☎Facebook

☎Twitter

☎Instagram

☎HP official homepage

☎SNS

☎Facebook

☎Twitter

☎Instagram

☎HP official homepage

☎SNS

☎Facebook

☎Twitter

☎Instagram

☎HP official homepage

☎SNS

☎Facebook

☎Twitter

☎Instagram

☎HP official homepage

☎SNS

☎Facebook

☎Twitter

☎Instagram

☎HP official homepage

☎SNS

☎Facebook

☎Twitter

☎Instagram

☎HP official homepage

☎SNS

☎Facebook

☎Twitter

☎Instagram

☎HP official homepage

☎SNS

☎Facebook

☎Twitter

☎Instagram

☎HP official homepage

☎SNS

☎Facebook

☎Twitter

☎Instagram

☎HP official homepage

☎SNS

☎Facebook

☎Twitter

☎Instagram

☎HP official homepage

☎SNS

☎Facebook

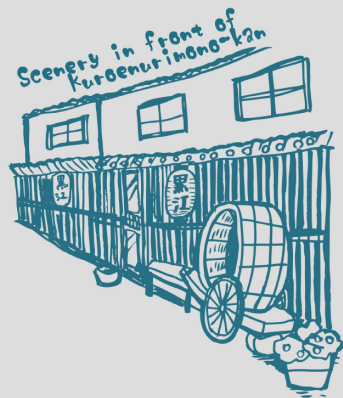
☎Twitter

☎Instagram

☎HP official homepage

Kuroe walking map

黒江
さんさくマップ



Kotonoura Onzansoen
A large garden created by the founder of the Nitta Factory at the beginning of the Taisho era. The pond by Kuroe Bay and the Japanese garden with pine trees and blue stones used the latest technology of the time.
Admission fee / ¥300

370Funō ☎073-482-0201
9:00~17:00・holiday: Monday
¥300 P ¥500

Recommended souvenirs in Kuroe

おすすめみやげ



Lacquered chopsticks
A convenient traditional Japanese gift. Wide range available.



Mikan cup / gourd cup
Cups made from oranges and gourds. A popular Wakayama specialty. Sold at Uruwashikan.



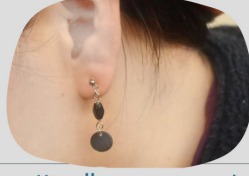
Kurushi-chaya/Sake etc.
Sells souvenirs and sake-related goods. Specialties such as raw sake are also available.



Suichuu-ka
(artificial flowers which open in water) Showa-style Suichuu-ka are difficult to obtain elsewhere, so they are very popular. Sold at Nurimono-kan.



Kainyan goods
Kainyan is a popular mascot character of Kainan, is sold as a netsuke and magnet at Uruwashikan.



Miscellaneous women's lacquer goods
Various items that are perfect for Japanese clothing such as accessories and hairpins. Sold at Uruwashikan.



Commonly known as "gobo-san"
通称「ごぼさん」
9 中言神社
Nakagoto Shrine



8 浄国寺
Jokokuji Temple



Row of houses in the shape of a zig-zag line like saw teeth
5 Vettin-san
Kawabata Street
3 Kijiya



26 Taisho Onsen
24 Gomon
23 A'sworks
4 Urushiya Hayashi



1 Uruwashikan
Kuroe Post office
Tourist parking



24 Gomon
23 A'sworks
4 Urushiya Hayashi



24 Gomon
23 A'sworks
4 Urushiya Hayashi



24 Gomon
23 A'sworks
4 Urushiya Hayashi



24 Gomon
23 A'sworks
4 Urushiya Hayashi



24 Gomon
23 A'sworks
4 Urushiya Hayashi



to Wakayama City
to Wakayama Minami IC
9 中言神社
Nakagoto Shrine



to Wakayama City
to Wakayama Minami IC
9 中言神社
Nakagoto Shrine



to Wakayama City
to Wakayama Minami IC
9 中言神社
Nakagoto Shrine



to Wakayama City
to Wakayama Minami IC
9 中言神社
Nakagoto Shrine



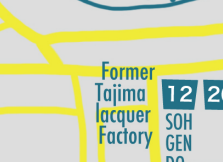
to Wakayama City
to Wakayama Minami IC
9 中言神社
Nakagoto Shrine



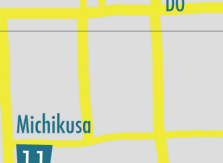
to Wakayama City
to Wakayama Minami IC
9 中言神社
Nakagoto Shrine



to Wakayama City
to Wakayama Minami IC
9 中言神社
Nakagoto Shrine



to Wakayama City
to Wakayama Minami IC
9 中言神社
Nakagoto Shrine



to Wakayama City
to Wakayama Minami IC
9 中言神社
Nakagoto Shrine



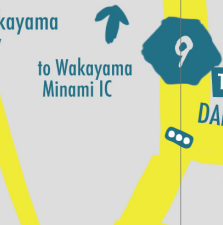
to Wakayama City
to Wakayama Minami IC
9 中言神社
Nakagoto Shrine



to Wakayama City
to Wakayama Minami IC
9 中言神社
Nakagoto Shrine



to Wakayama City
to Wakayama Minami IC
9 中言神社
Nakagoto Shrine



to Wakayama City
to Wakayama Minami IC
9 中言神社
Nakagoto Shrine



to Wakayama City
to Wakayama Minami IC
9 中言神社
Nakagoto Shrine



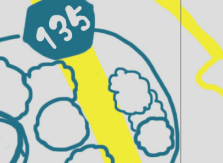
to Wakayama City
to Wakayama Minami IC
9 中言神社
Nakagoto Shrine



to Wakayama City
to Wakayama Minami IC
9 中言神社
Nakagoto Shrine



to Wakayama City
to Wakayama Minami IC
9 中言神社
Nakagoto Shrine



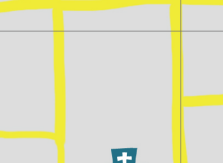
to Wakayama City
to Wakayama Minami IC
9 中言神社
Nakagoto Shrine



to Wakayama City
to Wakayama Minami IC
9 中言神社
Nakagoto Shrine



to Wakayama City
to Wakayama Minami IC
9 中言神社
Nakagoto Shrine



to Wakayama City
to Wakayama Minami IC
9 中言神社
Nakagoto Shrine



to Wakayama City
to Wakayama Minami IC
9 中言神社
Nakagoto Shrine



to Wakayama City
to Wakayama Minami IC
9 中言神社
Nakagoto Shrine



to Wakayama City
to Wakayama Minami IC
9 中言神社
Nakagoto Shrine



to Wakayama City
to Wakayama Minami IC
9 中言神社
Nakagoto Shrine



to Wakayama City
to Wakayama Minami IC
9 中言神社
Nakagoto Shrine



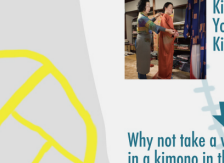
to Wakayama City
to Wakayama Minami IC
9 中言神社
Nakagoto Shrine



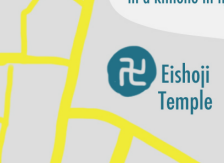
to Wakayama City
to Wakayama Minami IC
9 中言神社
Nakagoto Shrine



to Wakayama City
to Wakayama Minami IC
9 中言神社
Nakagoto Shrine



to Wakayama City
to Wakayama Minami IC
9 中言神社
Nakagoto Shrine



to Wakayama City
to Wakayama Minami IC
9 中言神社
Nakagoto Shrine



to Wakayama City
to Wakayama Minami IC
9 中言神社
Nakagoto Shrine



to Wakayama City
to Wakayama Minami IC
9 中言神社
Nakagoto Shrine



to Wakayama City
to Wakayama Minami IC
9 中言神社
Nakagoto Shrine



to Wakayama City
to Wakayama Minami IC
9 中言神社
Nakagoto Shrine



to Wakayama City
to Wakayama Minami IC
9 中言神社
Nakagoto Shrine



to Wakayama City
to Wakayama Minami IC
9 中言神社
Nakagoto Shrine



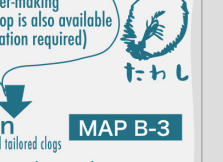
to Wakayama City
to Wakayama Minami IC
9 中言神社
Nakagoto Shrine



to Wakayama City
to Wakayama Minami IC
9 中言神社
Nakagoto Shrine



to Wakayama City
to Wakayama Minami IC
9 中言神社
Nakagoto Shrine



to Wakayama City
to Wakayama Minami IC
9 中言神社
Nakagoto Shrine



to Wakayama City
to Wakayama Minami IC
9 中言神社
Nakagoto Shrine



to Wakayama City
to Wakayama Minami IC
9 中言神社
Nakagoto Shrine



to Wakayama City
to Wakayama Minami IC
9 中言神社
Nakagoto Shrine



to Wakayama City
to Wakayama Minami IC
9 中言神社
Nakagoto Shrine



to Wakayama City
to Wakayama Minami IC
9 中言神社
Nakagoto Shrine



to Wakayama City
to Wakayama Minami IC
9 中言神社
Nakagoto Shrine



to Wakayama City
to Wakayama Minami IC
9 中言神社
Nakagoto Shrine



to Wakayama City
to Wakayama Minami IC
9 中言神社
Nakagoto Shrine



to Wakayama City
to Wakayama Minami IC
9 中言神社
Nakagoto Shrine



to Wakayama City
to Wakayama Minami IC
9 中言神社
Nakagoto Shrine



to Wakayama City
to Wakayama Minami IC
9 中言神社
Nakagoto Shrine



to Wakayama City
to Wakayama Minami IC
9 中言神社
Nakagoto Shrine



to Wakayama City
to Wakayama Minami IC
9 中言神社
Nakagoto Shrine



to Wakayama City
to Wakayama Minami IC
9 中言神社
Nakagoto Shrine



to Wakayama City
to Wakayama Minami IC
9 中言神社
Nakagoto Shrine



to Wakayama City
to Wakayama Minami IC
9 中言神社
Nakagoto Shrine



to Wakayama City
to Wakayama Minami IC
9 中言神社
Nakagoto Shrine



to Wakayama City
to Wakayama Minami IC
9 中言神社
Nakagoto Shrine



to Wakayama City
to Wakayama Minami IC
9 中言神社
Nakagoto Shrine

Walking course
黒江の職人めぐり
Visiting Kuroe's craftsmen

22 HOUSEHOLD INDUSTRY
Blacksmith in Kuroe town MAP C-4

Wrought-iron art
Kuroe town has more iron signs.

12 SOHGENDO
Former Tajima lacquer factory MAP B-4

Scenic brick building. It is also used as an atelier for young artists. There are exhibitions several times a year.

23 A's Works MAP B-3

Scourer shop
A scourer-making workshop is also available (reservation required)

24 Gomon MAP B-3

Kimono wearing experience. You will be dressed by a professional. Kimonos are available for rent.

Why not take a walk in a kimono in the nearby park? MAP C-1

Full day tour
Walking course
漆職人に会う
Meet people who know lacquer

2 Ikesho Shikki store MAP B-3

Founded in 1876
Learn about lacquerware at a long-established lacquerware shop.

6 Kuroe Nurimono-Kan MAP B-4

Old private house cafe
Lunch with lacquerware. Set meals and Kuroe curry are popular.

8 Jokokuji MAP A-3

Commonly known as "gobo-san"
You can view the sunset over the town of Kuroe from under a 600-year-old camphor tree.

1 Uruwashikan MAP B-3

Kishu Lacquerware Traditional Industry Hall
"Makie" experience - about 1 hour

7 Kurushi-chaya MAP A-4

A short break at a local brewery
A space where you can compare various sakes.

5 Vettin-san MAP B-4

Inheritors of Kuroe's "narezushi"
Admire the garden and have tea with lacquerware. Narezushi available as a souvenir.

A

B

C

A

B

C